



# Bargen Ddinesig

BAE ABERTAWE  
SWANSEA BAY  
City Deal

## Programmes / Projects Update

April 2021



# Yr Egin - March 2021



**Project Partner Lead: UWTSD**



## Activities Completed

The Phase 1 Lessons Learned Activity successfully completed, which brings the University's evaluation process to a close in advance of formal Gateway 5 Monitoring and Evaluation approval

Creative Sector Demand Study formally commissioned and underway (BOP)



## Activities Planned

Following completion of the Egin Phase 1 project and Joint Committee approval of the Full Business Case, the University is now proceeding with the next stages of the Integrated Assurance Action Plan in accordance with the agreed timetable to deliver Egin Phase 2

Formal Welsh/UK Government business case approval still outstanding as of 11<sup>th</sup> November

Discussions between Carmarthenshire County Council and the University are proceeding at pace to complete the Phase 1 Funding Agreement

Creative Sector Demand Study to complete in May 2021 to inform the development of Egin Phase 2



## Risks

Effect of Covid-19 on the Welsh/UK/global economies and the creative sector, and the implications for future level and nature of demand for Yr Egin

## Issues

Implications of the recently announced Welsh Government strategy to achieve much increased levels of permanent remote working post Covid-19 and to develop a network of local, community-based working hubs



# Pembroke Dock Marine – Mar 21

Project Partner Lead: Pembroke Dock Marine Board



Wave Hub



Tim James  
Project Manager

## Risks

Capital cost increase against PDI project budget set in 2017. (IP1)

MEECE's extension still outstanding but WEFO approved by WEFO subject to SBCD funding (IP6b)

Ongoing delays around funding agreements adding risk to deliverability.

## Issues

Consideration of the changes in UK state aid and procurement policy on the SBCD procurement principles & how it applied to the PDM partners as non-contracting authorities.

Ensuring appropriate level of project governance and reporting is established to maintain the projects value to the SBCD whilst ensuring the project remains delivery and impact focused.

## Activities Completed

ORE catapult supported PD based Ledwood Mechanical Engineering to [secure £112k of funding to support](#) the diversification of their business into offshore wind (IP2, OP3, IP3, OP11-14)

META received planning approval for Warrior Way Tidal Test Site (IP5)

[First Minister virtually visited Bombora](#) at beginning of March. MEW and MHPA all provided content for this. Bombora shared their plans for growth and export from their Pembroke Dock base.

PR around [High Speed Transfer's tenancy for office and Warehouse space](#) went live 15.03.21

[DP Energy](#) have taken up office space in MEW's MarineHub. [QED Naval Limited](#) have also take up space in Pembroke Dock.(OP1,OP2).

ORE Catapult have fed back to Welsh Ports including Milford Haven, Port Talbot and Swansea on the potential role they could play for Floating Wind (OP11,OP13)

Direct employment across four elements upto 15 FTE (IP6)

SWIC's [£37m deployment project was announced today](#) (MHPA are a partner in this project)

## Activities Planned

MEW's State of the Sector Update is going to be live April 21. (IP3,OP1, OP2, OP6)

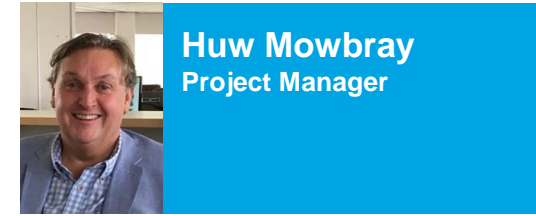
META conducting tidal resource assessment (IP5)

Partner collaboration agreement and formal governance post funding agreement execution

Consent management PDI (IP1)



# Swansea City & Waterfront Digital District



Project Partner Lead: City & County of Swansea



## Activities Completed

### Arena

Arena external cladding commenced.

Bridge successfully in place – March 6th

### 71/72 Kingsway

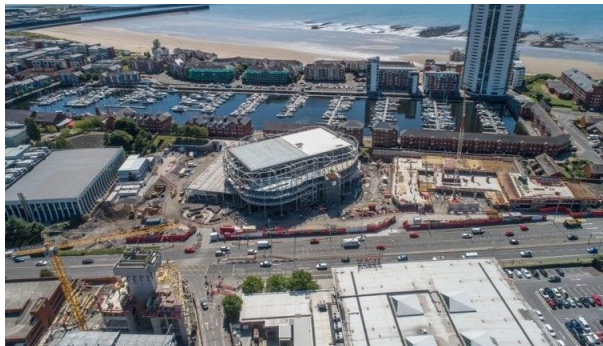
Construction tender clarifications received and being analysed

Cabinet report targeted for April 2021.

Letting discussions continue.

### Box Village

Planning permission for Box Village progressing.



## Activities Planned

### Arena

Letting discussions on ancillary commercial space at arena.

Six months left to completion.

Hotel designs being progressed.

### 71/72 Kingsway

Cabinet decision on 71/72 The Kingsway Q1 2021

Construction tender for 71/72 The Kingsway awarded.

Further detailed lettings discussions continue for 71/72 The Kingsway

### Box Village

Pre application discussions on planning.



## Risks

Effect of Covid-19 on construction, including programme slowdown and impact on costs

Effect of Covid-19 upon level and type of commercial demand for 71/72 Kingsway, Box Village and Innovation Precinct

## Issues

Delivery of outputs likely to be affected by Covid-19



# Pentre Awel

Project Partner Lead: Carmarthenshire County Council



Dr Sharon Burford  
Project Manager

## Activities Completed

- Business Case approved by UK &WG.
- Pentre Awel has progressed through the first stage of the DIT – Invest in Great programme.
- External Gateway Review recommendations actioned.
- Memorandum of Understanding prepared and issued to Financial Markets – Expression of interest received.
- Procurement documents prepared for Zone 1 for lot 6 SWWCF. Target issue date 24<sup>th</sup> March. Significant work incorporated to emphasise the quality aspects of the procurement including the Community Benefits.
- Submission underway to PNC bank to secure funding for the hydrotherapy pool included as part of the aquatics facilities.

## Activities Planned

- Secure the main contractor for Zone 1 through procurement.
- Complete procurement for client-side support services for Zone 1.
- Continue DIT submission
- Confirm finance option for CCC from Institutional bids. Institutional investment not required for zone 1
- Complete Heads of Terms with Zone 1 tenants.

## Risks

- Potential for loss of engagement by academic and health partners due to the delay in business case approval.
- Failure to maximise whole system benefits across all training providers on site due to individual confidentiality agreements.
- Infrastructure - public transport doesn't meet the needs of end users.



# Digital Infrastructure

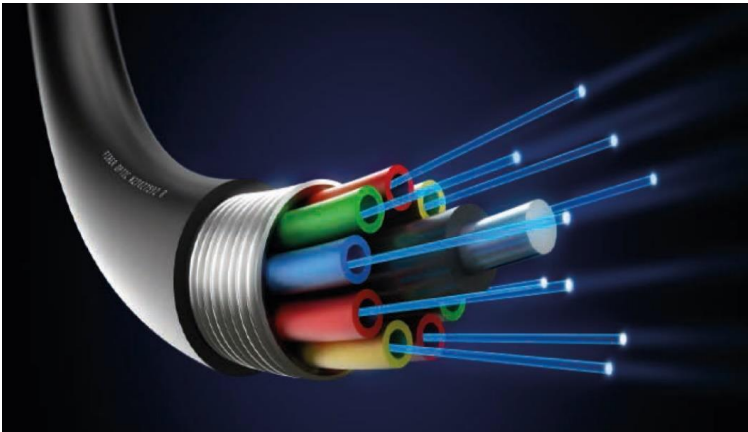


**Programme Partner Lead: Carmarthenshire County Council**



## Activities Completed

- Recommendations implemented from external stage gate peer review.
- Business Case Government approval letter received.
- Preparation for Project Manager resource recruitment.
- Regional funding bid submitted to Welsh Government Local Broadband fund to supplement existing plans and resources.
- Ongoing engagement with partners at local, regional and national level.



## Activities Planned

- Project Manager resource recruitment.
- Professional services resource recruitment.
- Detailed scoping of specific individual Projects within the Digital Programme.
- Further develop procurement and state aid strategy.
- Financial budget set up.
- Further engagement with partners at a local, regional and national level.



## Risks

- Ongoing policy alignment of Regional Digital Infrastructure strategy and Welsh Government (PSBA).
- A lack of Telecoms suppliers with the necessary appetite and / or ability to deploy, particularly rurally.

## Issues

- Lack of human resource allocated to the Programme.
- Insufficient financial resources allocated to address all the regions Digital Infrastructure aspirations.



# Homes as Power Stations

Project Partner Lead: Neath Port Talbot Council



Lisa Willis  
Project Manager

## Activities Completed

HAPS regional Project Board met

Business case comments received from PoMO

Policy workshop with WG and UKG

First lessons learned meeting took place

Presentation on business case revisions to Programme Board and Joint Committee



## Activities Planned

Third party funding agreements to be developed / agreed for the two HAPS funds

Workshop with key stakeholders to develop brand

Technical advisory group to meet

Project team to be recruited

Follow up business case discussion with WG and UKG



## Risks

Unable to appoint project team until Business Case is approved – approval to recruit at risk has been granted.

## Issues

Ensure alignment to other energy efficiency in housing programmes. This is in progress with on-going engagement.



# Supporting Innovation & Low Carbon Growth



Lisa Willis  
Project Manager

## Project Partner Lead: Neath Port Talbot Council



### Activities Completed

Swansea Bay Technology Centre - RIBA Stage 5 construction in progress

SWITCH – first meeting to develop specification for the specialist facility

Advanced Manufacturing Production Facility – developing specification with industry input

Programme Board met

On-going engagement with industry, academia and government

Update on business case revisions to Programme Board and Joint Committee



### Activities Planned

Business Case due for formal submission to PoMO following response to review

Air Quality Sensors planned to be installed in April 2021

Technical Advisory Group to meet

Ongoing regular dialogue with UK and Welsh Government, Industry Wales and academia



### Risks

Delay in approval of City Deal Business Case impact on already secured European Regional Development Fund match funding

Air quality monitoring sensors purchased at risk prior to business case approval

### Issues

Need to ensure Low Emission Vehicle Charging Infrastructure sub-project aligns to current and pipeline regional activity





# Skills and Talent

Project Partner Lead: Carmarthenshire County Council



Jane Lewis  
Project Manager

## Activities Completed

Economic Case for the Business plan nearing completion, focus meeting held with the RLSP Board. Strategic, Financial and Management case complete,

Programme Board established.  
Presentation to the ESB and Programme Board to give an update on the progress.

Pilot initiative for Engineering and Digital in schools developed over 350 students engaged in level 2 and Level 3 through the medium of Welsh



## Activities Planned

Complete Business Case and present to ESB, Programme Board, Joint Committee and the Local Authorities by end April.

Gateway review by mid April



## Risks

Delay in implementing the Skills and Talent programme could impact on the delivery of the skills required by the approved projects

## Issues

Impact of Covid-19 on the training landscape and the changing needs of businesses as a result of the pandemic



# Life Science & Well-being Campuses

Keith Lloyd  
Project Lead

## Project Partner Lead: Swansea University



### Activities Completed

Collaborative research and innovation activities continue

Internal resource identified to help address feedback

Further defined governance to maximise partner contribution

### Activities Planned

Address Business Case feedback in Q1 2021 from both PoMO and Grant Thornton Consultants for formal submission in Q2.

Continue to obtain letters of support to evidence partner commitment to support outline business case

Development of comms and engagement material and progress structured private sector engagement activities/plan

Confirm and finalise commercial arrangements between City & Council and the Health Board

Recruitment of dedicated Project Manager for 12 months.

Define skills development.

### Risks

Impact of current pandemic and economic downturn on securing co-investment from the private sector

Impact on timescales as a result of the pandemic, impact on private sector and competing priorities particularly in health

Impact on delivery due to lack of resource.

### Issues

Communication of the project's evolution

